

DRAWING NUMBER
49/38

49 / **38**

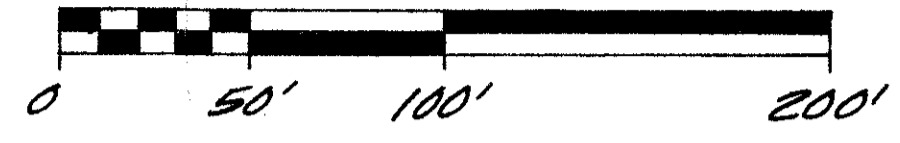
PART OF A P.U.D.

MONTEREY LAKE

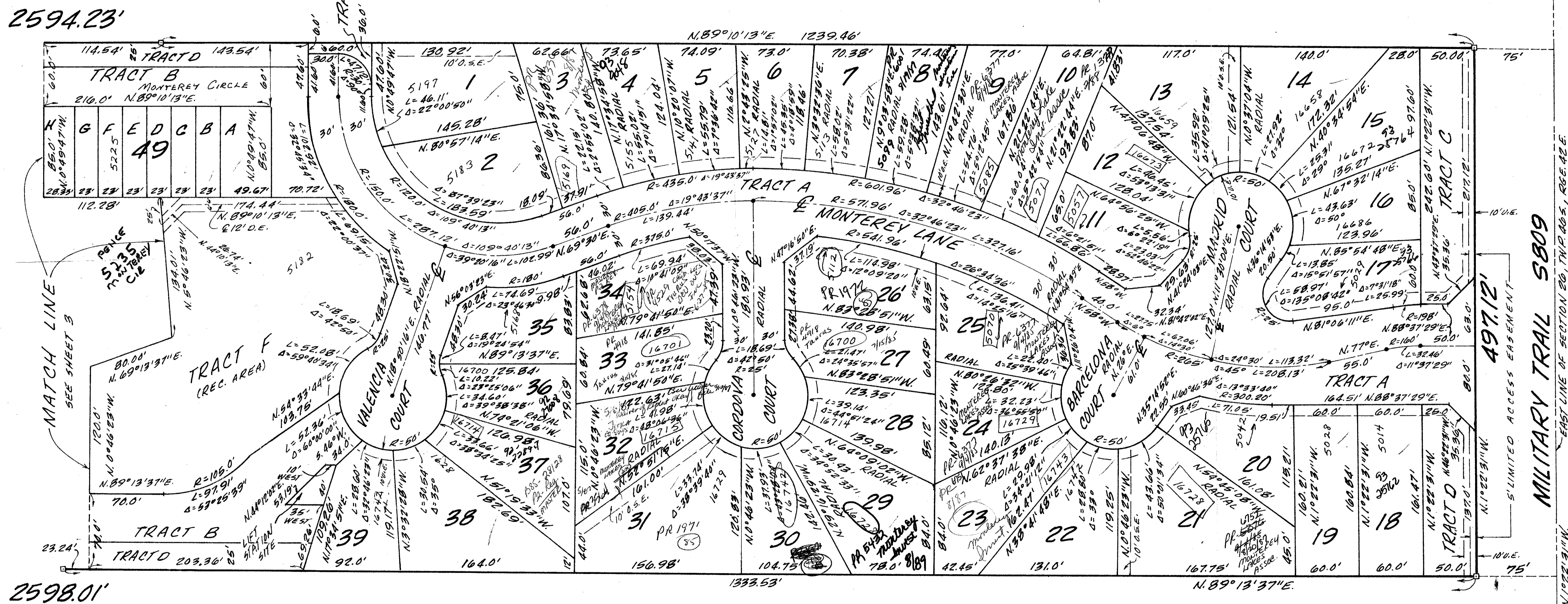
SECTION 26, TOWNSHIP 46 SOUTH, RANGE 42 EAST
PALM BEACH COUNTY, FLORIDA.

SHEET 2 OF 3 SHEETS

SCALE: 1"=50'



NOT PLATTED



DRAWING NUMBER
PLAN HOLD CORPORATION • IRVINE, CALIFORNIA
REORDER BY NUMBER 0754

DRAWING NUMBER
PLAN HOLD CORPORATION • IRVINE, CALIFORNIA
REORDER BY NUMBER 0754

DRAWING NUMBER
PLAN HOLD CORPORATION • IRVINE, CALIFORNIA
REORDER BY NUMBER 0754

BOCA-DELRAY
PLAT BOOK 44 PG 22-28

NOTE:
"U.E." = UTILITY EASEMENT
"O.S.E." = OPEN SPACE EASEMENT
"D.E." = DRAINAGE EASEMENT

SUBDIVISION	MONTEREY LAKE
BOOK	44
FLOOD ZONE	6
QUAD	26
SE PUD	MONTEREY LAKE
PUD NAME	MONTEREY LAKE
PAGE	38
FLOOD MAP	6
ZONING	AR
DATE	JUNE 1984
FIELD BOOK	0151
FILE	26

O'BRIEN, SUITER & O'BRIEN, INC.
ENGINEERS, SURVEYORS, LAND PLANNERS
2601 NORTH FEDERAL HIGHWAY, DELRAY BEACH, FLORIDA

DATE: JUNE 1984
FIELD BOOK: 0151
FILE: 26
SCALE: 1"=50'
SHEET 2 OF 3 SHEETS
PROJ. NO.: 84-14

Monterey Lake 49/38

MILITARY TRAIL SB09
EAST LINE OF SECTION 26, TWP. 46 S., RGE. 42 E.

LIVE OAK BLVD.

SE CORNER OF SECTION 26, TWP. 46 S., RGE. 42 E.